



THE PRATTLER

The Heyford Village Newspaper

May 2022

Issue No. 449



HEYFORD BOWLS CLUB Anniversary Open Weekend

Sat/Sun May 28 / 29th 2.00 - 5.00pm

Bar

BBQ



Meat Raffle

Tea/Coffee



Ice Cream/Lollies



Novelty Bowls
Prizes

Just bring some flat soled shoes/sandals and come along
for a fun afternoon

Apologies

Unfortunately due to a 'gremlin in the works', the Bugbrooke & District Flower Society article was omitted from April's issue of the Prattler. Please see the missing article below:

Bugbrooke & District Flower Society

At our AGM, Maureen Wright retired from the committee. Maureen had joined the Society in 1978 and had served as Secretary from 1981 to 1987 and then as Chairman for 20 years, remaining on the committee until this year. Thank you, Maureen, for all your work to ensure the Society continued to thrive and grow.



The Prattler

The Prattler is run by an active voluntary committee comprising of Sue Boutle, Christine Watts, Vicki Hamblin, Jez Wilson, Nick Essex, Richard Musson and Mary Rice. If you would like to submit articles or have any suggestions for future issues, please get in touch.

The Newspaper is supported by donations from the Parish Council, the Parish Church, the Baptist Church, Heyford W.I., Heyford Garden Club, Heyford Singers, the Bowls Club, the Village Hall and Heyford Picturedrome as well as the advertisers.

Thanks are also due to the volunteers who distribute it every month. It is all very much appreciated.

Councillors Annual Reports

The annual reports from the District council members, Cllr David Smith & Cllr Karen Cooper can be found on the parish council website.

<https://www.netherheyfordparishcouncil.org.uk/>



The April 4th 2022, Parish Council meeting was held in the Baptist Church Rooms.

Public Participation. A resident asked about a white van that has been parked by the green for over a month. The van apparently comes from West Yorkshire, has not been stolen and cannot be moved because its MOT, Tax and insurance are all in order. Police are aware and trying to contact the owner. It is believed that the van had broken down and was being towed.

Mr Andrews reported that the bund height around the former Wickes depot had been increased, and that the result of the public enquiry (as to whether Barley's could use the site) was still awaited. Barley's say that they are "helping out" around the village.

Lights. Clerk to chase for quote for replacing non – working lights with LEDs.

Trees. It is now too late to pollard the Limes on the Green.

Allotments. All plots taken, although some may become available shortly due to holders leaving the village. Footpaths. Jitties in poor condition; DM feels maintenance is required, and perhaps gravel.

Youth Club. Club closed for half term. Maple tree limb to be removed against advice of tree surgeon who feels it will spoil the tree.

Planning - Land behind Denbrook issues. WNC are still not enforcing their own planning conditions. Developer has not yet appealed the WNC refusal; Not clear what will happen if they don't. Clerk had passed on Solicitor advice that they needed to arrange an easement regarding access and that developer would have to pay the costs. There had been no reply. Message to be sent again by recorded delivery.

New Creation Farm. Proposed telecommunications upgrade. No problems or objections anticipated.

Asset Mapping Project. – Clerk reported that the deadline had been extended until April 23rd, and would try and complete as much as he could by April 20th.

Speed Cameras Resolved. To purchase a TruSign 30R speed camera at a cost of £2550 plus VAT. This is a Mobile unit which would be moved every 5 weeks or

so. The Chair felt there was a good chance of getting the purchase price back as a grant.

Re-wilding. To consider possibilities for rewilding the Parish. 15 potential sites had been identified, including the 2 cemeteries. AW & DM felt the grass contractors needed to be consulted with. Councillors voiced support for the project, and it was suggested that contact was made with the Parochial Church Council as well.

Bridge 32 Furnace Lane report. DM reported that he had contacted the Canal and River Trust again, concerning the deteriorating brickwork on canal Bridge 32. They have accepted responsibility, but have not given it urgent status, despite the deteriorating state of the brickwork.

Gravel Extraction. Council has received the rather unwelcome news that another application to exploit sand and gravel from the river valley is to be made by Mick George. Many residents will recall the lengthy battle against a similar proposal in the early years of the century. The same arguments will pertain – let us hope that they prevail again. The land concerned is in Upper Heyford Parish, but it would impinge on Nether Heyford.

Dogs loose on the Green. This issue has been raised and will be on the agenda at the next meeting. Some feel that dogs should always be confined to their leads, as there have been unfortunate incidents and “close calls” where uncontrolled dogs have fought or run onto the road endangering people, horses and themselves. Council would appeal to residents to keep their dogs under control at all times, and not to let them loose if they are at all undisciplined.

Annual Parish Meeting. This meeting took place prior to the normal meeting on April 4th, at 19.00, the Ordinary Meeting starting at 19.45. The Annual Parish Meeting is a remnant of the times prior to Parish Councils which were introduced in 1895. It is still a legal requirement that it be held, District Councillors and village organisations gave reports.

Parish Council meetings in 2022 will be on the first Monday of each month, (unless a Bank Holiday) and start at 19.30. The next ones are on Monday May 9th and Monday June 6th.

Reporting Highway and Footpath Issues. - <https://www.fixmystreet.com/>

Streetlights within the village can be reported to the Clerk, who will report them to the maintenance company. Please do not report to Balfour Beatty as they deal only with major Highway lights – i.e., motorway, A5 and A45.

Roadworks locally & nationally can be seen on this site
<http://streetworks.org.uk/live-traffic-works-map/>

Councillor list with responsibilities and preferred means of contact.	
C. Kiloh, 3 Church Lane. Nether Heyford. Tel. 07779 900860	Chairman Planning, Finance, Arnold Trust
L. Dilkes. 17 Furnace Lane, Nether Heyford, NN7 3JF e-mail thedilkesfamily@outlook.com 07967753216	Youth Club, Vice Chair, Finance.
L. Eales – 3 Church Lane, Nether Heyford Tel. 01327 341707 e-mail lyndaeales@aol.com	Allotments, Playing Field.
L Hall, 8 Western Ave, Nether Heyford linda.hall.netherheyford@outlook.com	Website
N. Haynes, 30, Weedon Rd, Nether Heyford Tel. 01327 340167 sansacre@hotmail.co.uk	Tree Warden, Planning, Joint Burial Board
Cllr Mel McClean, Burnham Cottage, Furnace Lane NN7 3JY mcleanmj@aol.com	Council rep. to Bugbrooke surgery
D. Musson. 16 Rolfe Crescent, Nether Heyford NN7 3NG Tel: 01327 344461 davemusson073@gmail.com	Footpaths.
Cllr Ian Parris, 1 Winston Close, NN7 3JX 07909 514916 ianparris@ianparris.com	Councillor
Colin Thomas, 17 The Green, Tel: 07776 180187 C.thomas327@btinternet.com	Councillor
A. Wallace. 5, Western Avenue, Nether Heyford. NN7 3NQ. andrew.wallace8765@gmail.com	Council rep to Village Hall
A. Williams 26 Church St, Nether Heyford, NN7 3LH anthony.k.williams@talk21.com	Chair of Planning, Finance, Council rep to School governors
Cllr Karen Cooper - West Northamptonshire Council, The Forum, Moat Lane, Towcester NN12 6AD www.westnorthants.gov.uk Karen.cooper@westnorthants.gov.uk Tel: 07753 638180	Conservative Councillor for Bugbrooke Ward – Lead Member for Nether Heyford, Blisworth & Gayton

*Clerk to the Parish Council: Guy Ravine Tel: 07935 931787
E-mail: netherheyfordparishcouncil@gmail.com*

Chairman's Report

This year, as I write the Country, and the County appear to be staggering from one crisis to another.

Covid, threat of war, and massive cost of living increases, do not affect the National response in support of a European Country in desperate straits, and strengthen our resolve as a Nation, and as a community.

The Neighbourhood Plan proceeds apace, and despite delays caused by lockdown, the steering group presented details of the Public Consultation and proposed amendments to the draft plan to the Parish Council for approval. Subject to a further independent review the PC will make a formal submission to WNC, who after completing their review will formally pass to the Planning Inspectorate. On approval WNC will hold a yes/no referendum for Nether Heyford. A yes vote will make the Neighbourhood Plan a legally enforceable document.

We have a new PCSO in Chris Dudley, and his visible presence has provided reassurance and discouraged anti-social behaviour.

Maintenance of roads remains poor, aggravated by the activities of Gigaclear, and currently a gas company bent on replacing underground pipes throughout the Village. The disruption, and stress caused to everyday life has been high, optimists believe it is for the better.

In an effort to alleviate parking issues, and improve life for disabled and elderly residents accessing One stop, bollards were erected by Highways, adjacent to pedestrian accessible areas, massively reducing inconsiderate parking and making life a little better for the vulnerable.

The Parish Council are to introduce a Traffic Calming Speed sign system for use in areas of Nether Heyford that experience regular speeding issues, adding to the safety of other types of road users and residents in general

Plans are afoot for the Queen's Jubilee weekend in June. The Village Fete is to be held on 4th of June and promises to be spectacular addition to four days of celebration.

Finally, we are lucky in Nether Heyford to live in a beautiful Village, to have well run local businesses providing excellent services. To have the really excellent Bliss Charity School, Heyford preschool, a Youth Club, Community allotments second to none, and a Playing Field Association supporting the most diverse sport activities anywhere.

We enjoy as a Village, so many activities, all of which will be named, and praised, on our entry into the Best Village competition completed by Alwyne Wilson.

Who wouldn't want to live here?

Charles Kiloh



Parish Church of St. Peter and St. Paul

Services for May 2022

Sunday 1 st	8:00am	Prayer Book Holy Communion at Flore Church
	10:00am	Holy Communion at Church Stowe
	11:00am	United First Sunday at Flore Church
	6:00pm	Informal Worship at Heyford
Sunday 8 th	10:00am	Benefice Service of Holy Communion at Upper Stowe
	10:00am	Morning Worship at Flore Chapel
Sunday 15 th	10:00am	Holy Communion at Heyford Church
	10:00am	United Worship (Holy Communion) at Flore Chapel & Chapel Anniversary
	6:00pm	Holy Communion at Upper Stowe
Sunday 22 nd	10:00am	Holy Communion at Flore Church
	10:00am	Informal Worship at Upper Stowe
	10:00am	Morning Worship at Flore Chapel
	4:00pm	Café Church at Heyford
Thursday 26 th	10:00am	Holy Communion for Ascension Day at Flore Church
Sunday 29 th	10:00am	Holy Communion at Brockhall Church
	10:00am	Morning Worship at Flore Chapel
	6:00pm	BCP Evening Prayer at Church Stowe

Midweek Services

Wednesday	9:30am	Morning Prayer via 'Why Pay' conference call. Please contact the Rector for the numbers to use.
Thursday	10:00am	Holy Communion at Flore Church
	2:30pm – 3:30pm	Flore Church open for private prayer
Friday	9:00am	Morning Prayer via Zoom. Please contact the Rector for an invitation

The Streets we shall be praying for during May are Brookside Place, Watery Lane and the playing fields in Heyford, Bricketts Lane and Springfield in Flore, Main Street in Upper Stowe and the Hall apartments in Brockhall.

Dear Friends

“Peter got out of the boat, started walking on the water, and came towards Jesus. But when he noticed the strong wind, he became frightened, and beginning to sink, he cried out, ‘Lord, save me!’” (Matthew 14:29b-30, NRSVA)

Images and stories of boats and storms have been an important part of my journey to ordination and my subsequent ministry. Fifteen years ago, as I began to explore my calling, Matthew’s story of the disciples’ fishing boat in the storm (Matthew 14:22-33), and the image of Peter stepping out of the boat to walk on the water, came to me many times. It took some time before I realised it was God’s invitation to ‘step out of the boat’, to step out of my comfort zone and follow his leading to new places, people and roles.

In the last couple of years, that story from Matthew’s Gospel - and similar accounts in the other Gospels - has taken on new significance as life seems to have spiralled out of control and become more uncertain. The storms of life still rage around us, disease, war, the rising cost of living, perhaps alongside other more personal challenges. We can often struggle to cope with difficulty and suffering and wonder at God’s lack of response.

In Mark’s account of the storm on the Sea of Galilee (Mark 4:35-41), Jesus is asleep in the boat when the storm hits, and the disciples wake him and call on him to save them from drowning. Jesus rises with authority and stops the storm in a display of divine power. Jesus was with his disciples in the storm and in their fear and he longed for them to have faith in him. His power to still the storm shows how much he loved the disciples. He loves us too, and is with us, through all the storms of life. Perhaps we need to call on him for help.

These days, the image of the fishing boat in the storm is not just a reminder of my calling from God. It is also a reminder of Jesus’ presence, and that he can bring calm in any storm. I’d like to close this month with this Breton fisherman’s prayer:

‘Dear God, be good to me, the sea is so wide, and my boat is so small. Amen’

With every blessing,

Rev Stephen (Tel: 01327 344436)



Nether Heyford Baptist Church

Services for May 2022

May 1 st	10:30 am	Worship led by John Perkins
May 8 th	10:30 am	Worship led by Allan Pope
	4:00 pm	Songs of Praise service led by Martin Buckby with tea and cakes
May 15 th	10:30 am	Memorial service for members and friends who have died during the last two years led by Martin Buckby.
May 22 nd	10:30 am	Communion service led by Les Britten
May 29 th	10:30 am	Church anniversary service led by Tony Brown

Events

May 6 th	2:30 - 4:30pm	Afternoon Tea and Cakes (books available). Donations for church funds
May 28 th	10am - 12 md	Coffee morning/Flower displays in church/ Gift day to celebrate our Church anniversary.

All welcome

Astronomy on the Green

May is a busy month for the observer, with some early starts as on the first the brightest and second brightest planets are in conjunction. To the east at 5 am, Venus & Jupiter are to be seen very close together in the sky below Pisces. Additionally, towards the southeast you can firstly see Mars just under Aquarius and then to the southeast close to Capricornus, Saturn makes an appearance.

On the second at 10pm (low in the northwest) a narrow crescent Moon is visible, and binoculars will reveal Mercury together with the Pleiades cluster close by. On Friday the sixth in the early hours, the Eta Aquarid meteor shower (remnants from Halley's comet) will sparkle across the sky.

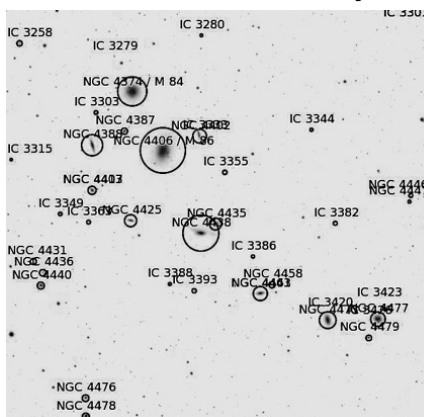
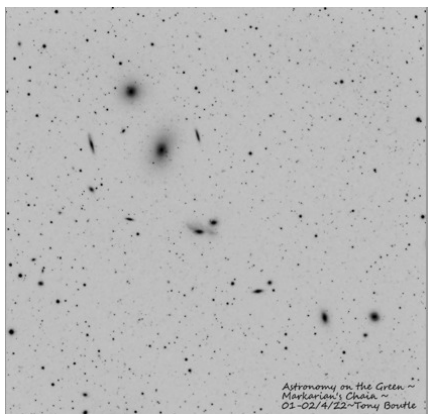
In the early hours of the sixteenth a total Lunar eclipse will begin at 3:27 am and will reach totality at 4:29 am (as seen locally). This will coincide with a full super moon, so this is going to be worthwhile being around in the wee hours of the morning.

At the very end of the month and into the first of June the Tau Herculid meteor shower promises to be impressive (but this cannot be guaranteed), The debris comes from the comet Schwassman–Wachman-3 (the names of comets are derived from their discoverers). The radiant point the shooting stars come from (the star and constellation), In this case it was originally Hercules (the Tau star) but has now shifted to Boötes (the Herdsman). The best viewing will be just prior to dawn.

The constellation of choice this month is Virgo and contains a giant cluster of Galaxies (some 2,000) at around 54 million light years from earth. Contained within this is a chain of gravitationally linked galaxies (seven of them) the relationship was found by Benjamin Markarian while observing the curved chain in the 1960's. Below is my image of Markarian's chain, together with an annotated version (both are in inverted black & white) the two galaxies in the centre of the chain are known as Markarian's eyes.

Clear Skies!

Tony Boutle



Heyford Entry-preneurs (Village Signs)

Well another year has passed and finally the flowers at our village entry signs are looking quite established. I would like to thank everyone who has been kind enough to donate plants and bulbs to help brighten them up. As you might remember, the flowers were all pulled up and stolen from our sign on the Bugbrooke Road. Well thanks to Ken and Rhona Wade, they have been replaced and the sign is looking lovely once again. So thank you guys.

Thank you also to The Foresters Arms for donating some Northampton stone for the borders. We will be able to replace any broken ones now.

As always, we will need plenty of summer flowers to replace the spring bulbs, so if any of you are thinning plants out or have any wild seeds, plants or bulbs going spare, we will gratefully take them off your hands. I can collect or if you are passing, they can be dropped off at 24 Furnace Lane. I would love to plant some bulbs at the top of Furnace Lane on the A5 to make it look pretty next spring, so again if you have any spare that's where some will go.

Finally, I want to say a very big THANK YOU to the lovely people who help to keep the flowers thriving during the hot summer months by giving them a much needed drink.

We hope they give you a little pleasure as you drive past or on your walks.

NETHER HEYFORD

OFSTED No. EY450747

CHARITY No. 1029571

Pre-School

Ages 2-5 years

Open Monday-Friday, 9am-3pm

Funding available for eligible 2,3 and 4 year olds

Highly qualified and experienced staff

Excellent links with Bliss School

Fantastic village location

Use of numerous outdoor facilities including:

- Bliss Schools' Outdoor Classroom
- Forest School activities
- 'Rising 5' sessions for those starting school in September
- Childcare vouchers accepted



Before & After School Club

Wrap around are available for children aged up to 11 years old

Breakfast Club incl. breakfast open from 7.45am

After School Club open until 6pm

'Walking Bus' to and from Bliss School provided if required

Transition sessions available for Bliss School reception class.

**Drop in and see us at
The Church Rooms, Church Lane,
Nether Heyford or call on
07984 055 828**

**info@netherheyfordpreschool.co.uk
www.netherheyfordpreschool.co.uk**

Allotment News

Village Award

Readers of the Prattler may be aware from reading other articles that the village of Nether Heyford is being considered for an award under the Northamptonshire Village Awards Scheme organised by ACRE (Action with Communities in Rural England). One important element of this concerns the creative use of community spaces. We have therefore included a section on the allotments in our village and the refurbishment work that has taken place there over the past three or four years. Here is that submission:

Just under four years ago many people in the village of Nether Heyford began to despair that the allotment site was going to rack and ruin. Weeds and assorted rubbish encroached onto everyone's plots. The allotments, taken as a whole, looked a mess. Fast forward to the present and what a change has occurred. Thanks to the support of the Parish Council, a group of volunteers and most importantly, the good people of our village, we have been able to make the allotments not only look good, but once more become productive – in so many ways.

Rather than slowing down our plans for development, lockdowns, caused by Covid, created an unexpected opportunity for families to make even more use of the allotment space. At one stage last year, and for the first time ever, we had a waiting list! Before the Covid pandemic took hold, work had begun on a long-abandoned section of the site. This was cleared and, with generous support from local businesses, organisations and individual residents, over thirty heritage fruit trees were purchased and planted. Three years on, they are thriving. We look forward to future harvests and inviting the villagers to share in this bounty.

Following on from the success of the community orchard, a “community jam patch” was created, utilising fruit bushes that had been donated by villagers or rescued in the clearance work. In addition, a “community cutting garden”, made up of annual and perennial flowers, has also been created. An increasing number of local people have taken advantage of the flowers and fruit available in these community areas. Bouquets have been picked and arranged for birthdays, weddings and other special occasions, whilst armfuls of rhubarb and basins of berries have been gathered and numerous pots of jam, and gin, made from our fruit patch!

Another, long-abandoned area of the allotments has been turned over to a “wild area”. This is a carefully managed space that includes wild flowers, nesting boxes for birds and smaller mammals as well as areas for tall grasses to flourish and a host of mini-beasts to thrive. During the winter of 2020 a large wildlife pond was created and already wild life is moving in.

Having a place for the members of the community to sit and eat lunch whilst admiring these areas requires a seating area. Again, thanks to the generosity of villagers and fellow allotmenters, we have been able to create a green space with

tables and chairs, all of which were donated by the community. It has been a particular joy to be able to gather there and share a drink, some food and good company.

Community involvement in the allotments is strong. It has included "Sharing Saturdays" when villagers and allotmenters benefit from sharing and swapping garden items donated by the community. "Community Saturdays" are also regular events, when allotment holders gather to complete a variety of horticultural and maintenance tasks, also sharing their expertise with those still learning! As Covid restrictions were eased the community picnic area provided a much needed, welcoming space for seasonal picnics and barbecues, family gatherings and parties, all in a safe and socially distanced outdoor space.

To mark the sad loss of friends and family in the village during the past two years, and especially those involved in the allotments, a Memory Tree was planted in spring 2021. Spring blossom, summer shade and autumn colour is, we feel, a fitting tribute to the friends and neighbours no longer with us.

During the past year we have worked on the allotment site with classes of children from the village primary school, covering a range of topics including identifying wildlife, growing food, composting and the importance of recycling. Students following the Duke of Edinburgh Award Scheme and the Scouting Association Gold Award have completed sessions working with allotmenters on a weekly basis, and we are delighted that our local Scout group will be joining us later in the year to find out more about growing and caring for the environment. Our achievements in creating this wonderful, and much appreciated, outdoor community space has led to visits from organisations in other villages and towns who are also interested in developing similar community based projects.

A once abandoned area of land is now being put to good use by villagers.

It is no surprise that doctors are seriously considering prescribing gardening as a cure for some conditions. Monty Don, the presenter of BBC's Gardeners World says, in a telling way, that: "When you plant something, you invest in a beautiful future amidst a stressful, chaotic and, at times, downright appalling world"

We hope that we have played a small part in that, for everyone in our community to share.

Keeping in Contact

At the moment we have one or two small vacant plots. If you would like to rent one of these or have any other queries about the allotments please contact either Lynda Eales at lyndaeales@aol.com or on 01327 341707 or Mike Langrish at langrish_heyford@hotmail.com or on 01327 341390.

Mike Langrish

View from the Wildlife Patch

Our UK Wildlife numbers are in Free fall. Over the last 50 years we have lost an estimated 44 million birds from our skies. We have lost an estimated 82% of our insects over the same time. Perhaps, as a result of this, Hedgehog and Bat populations are in steep decline. (*Rebirding, Macdonald 2019, Pelagic Publishing*) Cuckoos and Turtle Doves are on a road to extinction in our islands with many other well known bird species set to follow.

I was in "The Patch" last week just looking round. Cowslips are now flowering in the "Meadow areas" whilst other plants showing through indicate the good, mixed flora for which we are aiming is developing nicely. This should attract a variety of insect and other invertebrate species. The Pond now has breeding populations of Common Frogs and Smooth Newts as well as invertebrates too numerous to list here, all are supported by the rich aquatic flora that is developing there.

In the Sallow tree by hedge I watched Blue Tits going into one bird box, whilst a Great Tit was singing a little way further along the hedge. No doubt one of a pair that is occupying another box. Dunnocks, Goldfinches, Robins and other birds were flying around in and out of the hedge and surrounding shrubs. These should find safe nesting sites on our patch as well. Hopefully there will be sufficient insect numbers to sustain their young to fledging size. There were also Butterflies, Hoverflies and lots more. We really feel the project is a success and will continue be for generations to come.

From the start, our management has been based on a premise that there are a lot of animals (both Invertebrates and vertebrates) that are looking for homes. (We call these homes "habitats".) We seek to provide those habitats and the animals move in to occupy them.

You could easily do similar things in your own garden

Number one. Stop poisoning them. It's no use attracting wildlife whilst you are using chemicals that are killing wildlife off. There is simply no need to use the array of chemical gardening aids that adverts tell us we need. You really do not need them. Pauline and I stopped using these years ago. Our plants are now stronger than ever. Slugs don't eat all our plants, Caterpillars thrive yet we don't see much damage on our plants. whilst Bees of different species are thriving as well as Hoverflies, Moths, Butterflies and much more.

Number two. Provide a place of safety for them. We have Ponds, Bird-boxes, Bee boxes, and Hedgehog boxes all in quite a small garden. We strategically place logs, heaps of grass, slates, stones etc. to provide shelters for wildlife. We already have expertise gained over many years in this, yet are learning all of the time. If you want to research this subject look to the RSPB. Or Our local wildlife trust, - The Bedfordshire, Cambridgeshire and Northamptonshire Wildlife Trust. These

and many others provide good advice on their websites. We are all learning all of the time.

Number three. What about that lawn? Last year I experimented with a small patch of lawn about 2 x 1.5M. I mowed in late March then left it till late August. I was pleasantly surprised. Previous to this we had never seen a Grasshopper in our garden. Suddenly we had a Colony of Common Field Grasshoppers singing away as they do. Also there were Grass Moths. These are the little, pale coloured, pointed moths that sit on long grass stems. They appeared in abundance along with other species new to our garden. That little patch is now much slower growing than the rest of the lawn, and has many more plant species. I will leave more grass unmown this year and may plant the original with a wildflower rich lawn mixture next Autumn. Plantlife and other Conservation organisations are promoting “No Mow May”. Look this up online then choose to take part. If you do choose to leave all or some of your grass unmown in May, I will be advising how to turn this to the advantage of yourself and to our Wildlife in next months Wildlife Patch article. I am also “No mowing” maybe we can compare notes.

Dave Musson



U3A

Monthly meetings take place in Bugbrooke Sports & Community Centre, Camp Close, Bugbrooke NN7 3RW.

Prospective Committee Members are still being sought – please consider this carefully, for the existing Committee is at the minimum for a viable Group. Offers of help and participation are always welcome.

Meetings will be subject to prevailing government guidelines in relation to coronavirus.

Monday 16th MAY – ANNUAL GENERAL MEETING

Guests welcome at the monthly meetings – to learn more visit our website www.u3asites.org.uk/upper-nene

Village Hall News

I am pleased to report that we are very fortunate to have a new cleaner for the Village Hall who is no stranger to the job. Carol Collins handed over the reins to Lyndsey and now Lyndsey has handed them back again. We are very lucky in this village that our residents are willing to take on these vital jobs to our community.

We have signed up to new contracts for our electricity and gas. Like all of us the village hall is not immune to the increase in prices but we are happy that we have got the best deal possible.

We are also changing our bank because of difficulties experienced with our current bank. I would like to thank our treasurer Philip Letts for his patience in dealing with the problems our current bank has caused. Hopefully by my next report we will be enjoying trouble free banking.

Towcester Blind Club have kindly given us a wheelchair which was surplus to their needs. This will be available to all in the village hall.

Next month is our annual fete on 4th June. Volunteers to help us set up stalls in the morning at 9.30 would be very welcome. We will also be providing teas in the village hall from 2.00 to 5.00. Donations of homemade cakes, scones and biscuits would be appreciated as always.

Joan Kirkbride
Village Hall Chairman
Tel 01327 340370
Email jknhvhchairman@gmail.com

Welcome Packs

Welcome packs are available for newcomers to our Village. The information in them helps people feel at home quickly.

If you notice that someone has moved in recently, get a pack for them by calling:

Sue Morris
21 The Green
Nether Heyford
01327 349387



In Nether Heyford


The April Meeting of the Nether Heyford WI gave us all much food for thought as Kate Mawer told us of the work done by Rugby based Charity, Practical Action. We are often asked to donate money, food or clothing to help people in under-developed countries but Practical Action has a different approach to 'helping'. The money donated to them goes towards showing the people themselves how to solve the difficult problems facing them and move on. We were told of young women who were taught how to keep chickens and from there the learning progressed to selling eggs, learning to run a small company and employ more young people. In Bangladesh, where farmers were regularly faced by flooding, they were taught to make floating gardens to create a supply of food and crops. Practical Action – Making Change Happen.

The next two WI meetings are for members only as we go on our annual outing in May. This year we are going for a tour of Northampton Shoe Museum, which has the largest collection of historical footwear in the world. Altogether the museum holds 12,000 shoes. Can you think of a better place for a group of ladies to spend an evening?

In June we will be sharing the memories of the Coronation Year by going back in time, like so many others, to the 1950s and seeing how the Nether Heyford WI Ladies celebrated the Coronation.

On July 7th it will be back to normal in the Village Hall at 7.30 with Heather Wilson telling us about Greenacres Rural Enterprise. We would love to see you there!

Mary Rice
Heyford Lodge
01327 340101

**DOUCE MOWER SERVICE**

Free collection and delivery
All work guaranteed
Will your lawnmower work again next Spring?
For peace of mind, a winter service is the answer.
Ring Northampton 638055 daytime, or call
George Rands after 6pm on Weedon 340678

Dear Diary,

May 1970

You may have noticed I've not found time to write since my wedding in 1966, but I now have a little time on my hands so here goes.

We are still talking about our wonderful day in September 1966. The service was taken by Rev. Robert Hensher in Heyford Church at 2 o'clock, and photos taken outside the church and at the reception in the village hall. Perfect. We caught the 6 o'clock train to London for one night, then another train the next day to Ilfracombe for one week. We'd saved £1,000 which covered a deposit for a house, basic furniture, our wedding and honeymoon, so we were very proud of ourselves. Our parents paid for the Reception and flowers.

Another important fact in 1966 was that England beat Germany 4-2 to win the Football World Cup. Bobby Moore was Captain and Geoff Hurst scored a hat-trick. At least Mick won't forget what year we were married. Will they ever do it again?

A lot has happened in Heyford since we left. New homes have been built in Church Lane, priced at £3,295. Also in Wakefield Way, Brook Farm, Middle Street, Winston Close and a new estate is ongoing behind Furnace Lane by Wilsons, Builders.

We were happy in our new home although we had no central heating, just a fireplace in the living room with a back boiler to heat the water. We bought a grey carpet for the living room from Rainbow Carpets in Jimmies' End, then we bought an Axminster carpet for the bedroom, interest free, through Mick's employer. Our first washing machine (circa 1940's) came from a girl I worked with at The Town Planning office. It had a paddle and you filled it with hot water. We had a spin-dryer which walked round the kitchen as it spun. It's gone now.

Mick passed his driving test so we bought our first car, a Ford Anglia, via an advert in the C & E. Doors were a bit rotten.

Luckily we bought our first television just after we were married. It was black and white and cost us £66, which we paid for weekly. I say luckily because in October 1966, Mick had to go into Creaton Hospital for a hernia operation and he was there for a week, amongst people with TB. You can imagine the teasing he got from his mates, one month after his wedding. A boring week for us both.

After 3 years in Duston, and much discussion, we both decided that we would like to move to a village and start our family, so we looked at several houses we could afford and guess where we ended up – back in Heyford. We sold our house making a profit of £600 which helped with the deposit for a house on the Wilson estate. Unfortunately the builders changed their plans and we were obliged to move in with mum and dad and wait. After 8 months we have saved more money, so we have bought a house in Winston Close for £5,000 instead.

Whilst living with my parents, we have discovered that our first child is on its way, so that's how I get to have time on my hands at the moment. A 'lady in waiting' you might say. So this is the last Diary entry I shall make for the foreseeable future as I expect to have my hands full with moving home and bringing up a family, but I've really enjoyed recording important events in my life over the last few years. Who knows what the future holds for us and our lovely village.

Polly

Heyford Spring Clean

Many thanks to everyone that took part in this year's village clean up. As well as the general litter, rolls of carpet and a microwave oven were cleared from the village. While we can't eradicate litter entirely, the situation does seem to be improving in a lot of the village locations.

Sue Boutle

Nether Heyford Village Hall



**Available for Club Meetings
Parties, Weddings, Business
Meetings etc. Modern facilities,
Disabled access friendly**

Bookings: [nhvhbookings@gmail.com](mailto:nvhbbookings@gmail.com)

Website: www.netherheyfordvillagehall.com

Phone: 01327-342167

Queen's Coronation Party in Upper Heyford



This was held in the large barn which is now a house in Upper Heyford. to celebration the coronation of Queen Elizabeth 2nd in 1952.

Marg and Stan Faulkner are dressed as a Gypsy and a Clown. Can anyone name the others pictured?





Joan Garratt

It is with great sadness that the family of Joan Garratt aged 97, announce her passing on 12th April 2022, reunited with much missed husband Joe.

Her funeral will be at 2pm at Milton Crematorium on the 9th May, she will be leaving her home in Close Road approx 1:30pm

Food Bank

Don't go hungry – if you are in need of help, please contact Towcester Food Bank 07724 832043 (24 hours). www.towcester.foodbank.org.uk

Leave a message and they will phone you back. They can issue vouchers for food as well as a delivery or collection service.

Alternatively if you wish to help, please leave donations for the food banks in the box outside the door of 15 Middle Street where they are delivered to the banks twice a week.

Thank you.

CHIROPODIST

Ms Lindsey Morrison BSc Pod Med
HCPC registered

Home Visiting Practice. Treatment includes
nail-cutting, corn and callus removal, sore feet,
fungal infections.

Advice on all aspects of foot care.

For more information ring: 01604 750464

Heyfords Wildlife Association

Creating a wildlife friendly garden

Wildlife can make its home in our gardens in many different ways. There are lots of things we can do, from planting to maintenance, that will make them as welcome as possible.

Making our gardens wildlife friendly doesn't necessarily mean that we have to leave them to grow into wild jungles. Every space, whether it's a huge estate or a busy family garden, can give a home to nature. Even the smallest of gardens can offer up a huge variety of different habitats for wildlife. There are lots of ways we can introduce, or let nature create, a diverse range of homes for nature in our outdoor spaces. It's good to create as many habitats as possible without cramming too much in. Think about the space you have available and focus on making these microhabitats as good as they can be.

You may not even realise that some of the most common unassuming garden features can house thriving worlds of wildlife. Lawns for example, especially areas of un-cut long grass, are an important habitat for all sorts of insects and minibeasts, not to mention a feasting ground for the hungry birds which feed on them.

Borders, filled with flowering plants and shrubs, give nectar rich food to butterflies and bees, as well as seeds, berries and cover for birds and small mammals. Trees, and hedges offer roosting and nesting sites for birds and mammals, as well as valuable shelter and cover from the elements and possible predators.

Ponds and water features can be a habitat for a huge variety of animal life, from amphibians and invertebrates to bathing garden birds. Even woodpiles, compost and trimmings, the decomposing and discarded off cuts from your garden, can be incredible places for animals to live, feed and hibernate. Our gardens can be busy worlds of wildlife heaving with nature.

The Royal Horticulture Society have said that adopting a no-mowing approach for spring allows you to embark attractive lawn plants including daisies, buttercups, speedwell, selfheal, clover and dandelions. Both you and insects will be rewarded with an inviting, flowery sward. Reducing mowing, watering, chemical, and fertiliser is good for the environment too.

If you can't leave a whole garden why not leave a wide strip of grass or a large patch.

NB You will need to cut in the Autumn so there is no totally getting away from mowing.

Andy Wallace
(Info supplied by the RSPB website)



Heyford Garden Club

www.heyfordgardenclub.com

At our April meeting we had a talk from John Lee of Froggery Cottage, Desborough. John is the holder of the National Collection of Penstemons and he gave us an introduction to these plants, which apparently are almost trouble free being affected by no pests or diseases, and are generally completely hardy. Their only drawback (if it is one) is that they are of no use as cut-flowers as they wilt within a few days after picking. John brought some plants with him and made quite a few sales!

The evening also featured our annual tulip bench show. The standard was so high that the votes were evenly spread across the entries but there was a definite first and second in each class:

The large flowered section was won by Gil Guglielmi with Pauline Guglielmi coming second.

Audrey Mason won the small flowered class and Janet Forth came second.

Our next meeting will be on 9th May at 8pm and will feature a return visit from Patsy Rayner who will be talking about plants in literature. We shall also be having a seed swap and a spring flower arrangement show.

Keen Gardener?

Why not join the Garden Club. We have regular monthly meetings with talks on a wide range of topics from knowledgeable speakers, competitive shows, seed swaps and plant auctions, and the chance of buying your seeds for half price, and all for a yearly subscription of only £5 (and £2 at each meeting). We also organise trips to places of horticultural interest (covid permitting!) and of course you can meet fellow gardeners to exchange ideas.

Our meetings are held on at 8pm on the second Monday of each month from September to June and there are free refreshments at every meeting.

Some Things to do in May

- 1 Sow seed of biennials such as wallflowers and sweet williams
- 2 Divide and replant spring flowering bulbs
- 3 Prune spring flowering shrubs

Mark Newstead



Heyford Scouts

Heyford Scouts have had a busy few months of activities, they have enjoyed the cold, dark nights, completing a couple of short night hikes across muddy fields, with a little bit of map reading to help ensure they stay on track.

Several outdoor cooking sessions have been completed, with Scouts learning how to light a fire and to cook their own food outdoors, albeit at the moment, their menu options tend to be limited to bacon rolls and charred marshmallows dipped in chocolate.

Pancakes have been mixed, cooked and flipped, followed by our own pancake racing, in the dark, just to add to the challenge of running and flipping a pancake whilst desperately trying to be first across the finish line.

The Scouts have begun work on their Cyclist badge, this will see them hopefully completing a number of off-road rides during the summer term.

Heyford Scouts is open to all young people, both boys and girls, between 11 and 14 years old, we meet on Monday evenings from 7.00 to 8.45, either outdoors or in the Church Rooms.

Please contact Steve Rayner on stephen.rayner1313@gmail.com or 07525104534 if you would like to come and give Scouts a try.

Bugbrooke and District Flower Society

We meet in Nether Heyford Village Hall on the fourth Monday of the month at 7.30pm when we have a demonstration by a qualified NAFAS Demonstrator. All the arrangements are raffled at the end of the evening.

Our next meeting is on Monday 23rd May when we look forward to Alan Smith with his demonstration "Floral Symphony". Please join us for a relaxing and enjoyable evening – visitors are always most welcome – and you may win a beautiful arrangement.

For more information, please follow us on Facebook or contact Dianne on 01604 830063 or Simone on 01327 342167.



20th Anniversary Season

PRESENT



Nether Heyford Village Hall

**Friday May 13th And Saturday May 14th
at 7.30pm**

Tickets £8 Each (Children under 14 £4)

Advance Tickets from

Keith Rands-Allen

01327 340471

07971 786912

kvra44@gmail.com

www.heyfordsingers.org



Heyford Picturedrome

Attendances have been disappointingly and unsustainably low since Picturedrome restarted in February - probably a reflection of high levels of Coronavirus in circulation and a reluctance of our members to risk exposure to the disease. The committee therefore took the decision at their last meeting to suspend film evenings after the April film until September when we hope that the current disease levels will have greatly reduced and our members will feel able to begin supporting us again.

The situation has been compounded by the withdrawal of funding support from the County Councils so we now receive no subsidy at all. Our last two film shows have incurred losses of £200 each which cannot be sustained. We have therefore decided to increase the admission price to **£6.00** for the new season. We need audiences of at least 40 people to break even so we shall need your support if we are to continue.

There is hope that there may be other forms of financial support which are currently being investigated

Tony Clewett (Phone no. 341533)



heyford books

Set in the country-side of West Northants, near the M1 and A5, Heyford Books offers a warm welcome and a wide selection of 40,000 books.
Refreshments provided.

-  new creation farm, furnace lane, nether heyford, nn7 3lb
-  07814 555 516 / 07951 321 091
-  heyfordbooks@gmail.com
-  heyford-books.business.site
-  amazon.co.uk/shops/manna4theworld
-  @heyfordbooksnh



www.heyfordsingers.org

Amazing Grace
Barbara Ann
Canon in D
Daddy Sang Bass
Every Breath You Take
Fields of Gold

Goodnight Sweetheart
Homeward Bound
Light Eternal
Mamma Mia
Razzle Dazzle
Tuimbe

Score – 20 Years of Making Music - Friday 13th May/Saturday 14th May

The above will give you a flavour of what we plan to sing at our Spring Concert. At the point of writing this, things may change! Please see the full page advertisement in this Prattler for booking details. We will again have a 'cabaret' style seating arrangement and a bottle of wine will be included to enable you to enjoy the Concert even more...

Covid has, sadly, eaten into some of our rehearsal time but we have kept going despite this and you will see the variety of songs we are hoping to sing for you at our Concert. Songs like Tuimbe, an African-style original with words and music by David Waggoner, which is a celebration of the music inside us and all around us. As the lyrics say 'Let there be music, music that lives inside of me'. We will be including Amazing Grace which we all know and love. Then there is Canon in D by Johann Pachelbel which is extremely difficult - and high even for our very top sopranos - starting on a top F sharp but we can, when we pull out all the stops, bring tears to your eyes. And you can take that anyway you like. There are other favourites like Fields of Gold by Gordon Sumner (aka Sting) and excerpts from Mamma Mia with Razzle Dazzle from Chicago thrown in for good measure.

If we have the right mix of voices (dependent on the singers available at the time of the Concert) we will be singing Light Eternal which is a song written by our extremely talented pianist Graham Kinnersley during the pandemic and is in memory of all of the Covid19 victims. I say 'the right mix of voices' as this piece relies heavily on our Bass section which starts like a tolling bell 'Requiem, Requiem' and builds up to the joyous proclamation of 'Light Eternal'. Most of this is in Latin but you don't have to understand the words to realise this is a beautiful piece of music. We have so enjoyed learning and singing this piece and only hope we can do Graham's music justice.

Our new members have settled in well and we would like to say how pleased we are that you have joined The Heyford Singers, adding depth to our Bass, Tenor and Soprano sections.

Our Musical Director, Mary Rice, has just celebrated a special birthday. We had planned so much for this auspicious occasion, but sadly illness got in the way and our surprise party turned into one delay after another. We had a running order of choir members who were doing solos, duets and poems in order to show Mary that twenty years of conducting a community choir had indeed not been wasted. This

isn't a surprise any more but we plan to still do this shortly - not only to celebrate her birthday but twenty years of making music.

See you at the Concert!

JRA

Northamptonshire Action for Communities in Rural England 2022 Village Awards Scheme

Some of you may recall that in January I submitted an entry on behalf of Nether Heyford. This was in two parts: Our village as a community and creative use of communal space.

We have worked hard to assemble a strong group of village people keen to tell the judges about their respective amenities. By the time you read this, the judges will have been and gone – on Thursday 21st April.

The results of the judging will not be announced until about July.

Whatever the outcome, I want to record my warmest thanks to so many people in our village for their enthusiastic support. Another reminder of our great community.

Alwyne Wilson
(voluntary co-ordinator)

Advertising

If you would like to advertise in the Prattler, please email your ad to:
heyford_prattler@yahoo.co.uk

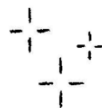
Advertisement rates per issue:

Full Page £30 1/2 page £15 1/4 page £10 Business Card £5

Ads received by the 19th of each month will be in the following month's issue.

The Olde Sun

Takeaway



Pizzas

Margherita	£8
Pepperoni	£8
Meat Feast	£8
Hawaiian	£8
Veggie (u)	£8



Classic Mains

Venison Burger	£6
Served in a seeded bun, smoked cheese & salad	
Chicken Burger	£6
Served in a seeded bun, smoked cheese & salad	
Vegan Curry	£6.50
Served with rice	

Sides

Chips	£3
Fries	£2.50
Hallaumi Fries	£3
Mushy Peas	£1.50
Curry Sauce	£1

Scampi	£6
Served with a lemon wedge & tartar sauce	
Beer Battered Fish	£6
Homemade Pie	£6
Homemade steak & mushroom pie. (Potato & cheese pie available for vegetarians.)	

OPENING HOURS FOOD

MONDAY CLOSED

TUESDAY

12:00 - 2:30

WEDNESDAY

12:00 - 2:30

THURSDAY

12:00 - 2:30 & 5:00 - 9:00

FRIDAY

12:00 - 2:30 & 5:00 - 9:00

SATURDAY

12:00 - 2:30 & 5:00 - 9:00

SUNDAY

12:00 - 4:00

SPECIALS

2 STEAKS & A BOTTLE OF WINE £30

2 PIZZAS & BOTTLE OF WINE £20



Heyford Bowls Club

It is great to get back on the green and the start of the 22 week outdoor season. May sees the start of our friendly matches against other local clubs, the first being at home on Thursday 5th May against Woodford Halse.

Now the green has opened for the season each Friday evening is open to everyone who is interested in trying out this sport. There will be members available to explain the game and help you get to grips with all that is involved. We have spares bowls for you to try, just bring some flat soled shoes.

Anniversary Open Weekend

The last weekend of the month sees us celebrating our 25th anniversary and the completion of our clubhouse extension. This fun weekend will involve lots of activities for the whole family together with a BBQ, Bar, Ice Cream/Lollies, Tea/Coffee and (daily) Meat Raffle. We will be open between 2.00 – 5.00pm both days so why not come along. We look forward to seeing you there.

Lorraine Streeter
Club Captain

Donations required

The Friends of Danetre Hospital Stall at the Fete is looking for books, jigsaws and bric-a-brac. If you have any of these items and would like to donate them they can be taken to:

Angela at 16 The Green or Jane at 22 South View

Thanking you in anticipation.

Flood Watch

April fooled - that's what it felt like when forecasters declared March as one of the warmest on record (22 degrees) whilst forecasting snow in the east of England for 31st March and 1st April. Locally we experienced blizzard like conditions albeit briefly with a ½" layer forming on ground already frozen from overnight subzero temperatures. April daytime temperatures have averaged around 13-14 degrees, although the Easter period experienced a brief rise towards 20 degrees. However early May is forecast to remain around 13-14 degrees, rising by the month end to 17 degrees. Lower than average rainfall in April, currently below 50% of average would result in the years total to be about 85% of normal.

Daylight hours continue to increase throughout May reaching 16 hours 23 minutes by month end. By June 21st the summer solstice will see the longest daylight hours of 16 hours 44 minutes before reducing at a rate of 2 minutes per day.

Global warming giving rise to higher ocean temperatures in the southern hemisphere has seen exceptional levels of rainfall and devastating flooding in Australia and South Africa. Forecasts of the effect of climate change in the UK by 2050 show large areas where coastal communities will disappear.

Flood risk maps have always remained a contentious issue with the general public describing them as "rubbish". Whilst this comment is a little extreme it is important to remember that these are derived from computer models which are still being developed to improve correlation to real events. Although every effort is made to obtain accurate river profiles and ground terrain mapping using LIDAR (laser based), accurate modelling of catchment area and rainfall are critical factors. Minor changes to the model or grid sizing chosen for the analysis can result in significantly different forecasts. It is critical that any modelling must be correlated to real events to prove accuracy.

To add to the confusion a recent investigation of published flood risk maps produced more questions than answers. For example:

- (a) map 1 shows flood zone risks with defences
- (b) map 2 shows flood zone risks without defences
- (c) map 3 long term flood risk in UK does not include climate change effects
- (d) map 4 flood map for planning can be used as a starting point for planning applications but does not include climate change effects.

For planning applications the area under development must be analysed to include the effect of climate change over the lifetime of the buildings, defined as 100 years. As a result the applications must include a flood risk analysis that includes climate change effects for 100 years. Thereby lies another issue-what magnitude climate change effects to consider. National planning guidelines indicate the use of peak flow rates with the climate change committee giving guesstimates for 2 and 4 degree temperature rises to year 2080. Whilst similar the E/A use CEH data which

has been produced to cover the UK and allows data to be chosen appropriate to a particular postcode.

What is needed to provide usable maps is:-

- (a) Historical map showing extent of flooded areas
- (b) A single map based on zones but including best estimate of climate change up to 100 years ahead. This single map would then be used for FRA of site under development. No assumed flood defences to be included.

The E/A say that whilst they are not obligated to providing maps with climate change included they will compute a flood risk map based on (b).

No further response has yet been received on the culvert maintenance issue.

J. Arnold.



SKIN·PURE·AROMATHERAPY

Home Based Beauty Salon
Nether Heyford
Emma McCarthy
07508468357
Facebook – Spa Beauty
Instagram – spabeautynetherheyford
10% DISCOUNT CODE: 'spabeautyheyford'
(redeemable on first visit)

Facials, Dermaplaning, Hot Stone, Aromatherapy, Pregnancy & Indian Head Massage, Hopi Ear Candling, Gel Nails, Manicures & Pedicures, Waxing, Threading, Tinting, Lash Lift & Spray Tans.



Tom's Blinds

Tom Brown
Blind Fitter with over 10 years experience
07740743628
Located in Nether Heyford
Call for free no obligation quotes
Find us on Facebook

Mike Read Gas Services

Mike Read
mikesgas.mgr@googlemail.com

MOB: 07960037067
Gas Engineer
no: 506717

travel counsellors



Lisa Hillyard F Inst TT

Professional Travel Agent offers
Confidential travel booking service

Package holidays • Cruises
Bespoke tailor made travel
Worldwide flights



Tel 01327 342067

Fax: 01327 349637

E.mail: lisa.hillyard@travelcounsellors.com
www.travelcounsellors.com/lisa.hillyard



Percy's Plumbing & Heating

William Percy
Plumber & Heating Engineer
percysplumbing@gmail.com
Mobile: 07526539176

LTD

5 Winston Close
Nether Heyford
Northampton
NN7 3JX

Call Today!

01327340654

Auction Sales & Valuations

Valuation, collection and auction service of individual items through to complete property and commercial clearances.

Call for a free no obligation quote or email **info@leauktion.co.uk**

SALE ENTRIES NOW INVITED

www.leauktion.co.uk



LOCKE & ENGLAND

AUCTIONEERS & VALUERS

01926

889100

18 Guy Street, Leamington Spa, CV32 4RT

RANDALL ELECTRICAL

ELECTRICAL CONTRACTOR

For all types of Domestic Electrical Installations

Free no obligation quotes

Tel: 01327 349144

Mobile: 07703 258169



IAN SUMMERLING, ELECTRICIAN

All electrical installations,
burglar alarms, extra sockets, etc

Tel 01604 862710

Mobile 07971 426775

39 Wallwin Close, Roade, NN7 2NA

Radmore Cattery

- Luxury & modern boarding chalets operating to Feline Advisory Bureau (FAB) standards
- Located on a family run farm overlooking a picturesque fruit orchard
- All chalets with an indoor heated sleeping area & outside covered exercise run

Enquiries to Kathryn (01327) 830825
Mobile 07732274252

Radmore Farm, Northampton Rd,
Litchborough, Towcester,
Northants. NN12 8HR

THE PRATTLER

NEXT EDITION

Submission date: 15th May 2022 for written items
20th May 2022 for emailed items

Publication date: 1st June 2022

e-mail: heyford_prattler@yahoo.co.uk

Or drop off at Heyford Meats or the One Stop Shop

Editorial: Sue Boutle 01327 342519

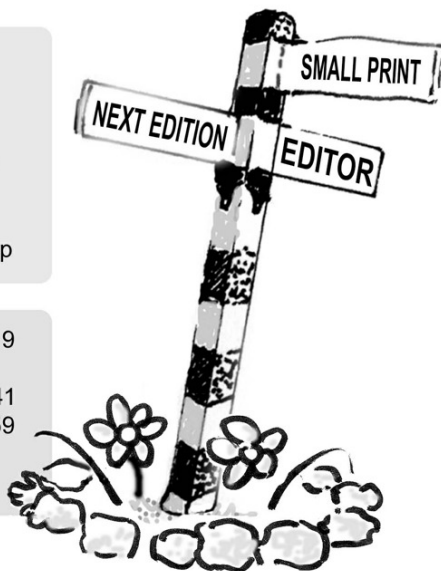
Proofreading: Tony Boutle

Typing & Distribution: Christine Watts 01327 340041

Adverts & Payments: Vicki Hamblin 01327 341059

Design: Nick Essex

Website: Jez Wilson



We welcome Prattler contributions, please send these to the Editor. Please include your name and full contact details. We prefer items by e-mail & all images should be JPEG files.

The Editors reserves the right to edit or refuse any submissions at their discretion.

The views expressed in this magazine are not necessarily those of any member of the editorial team. Advertising material does not imply any endorsement by the editorial team.



/HeyfordPrattler



www.heyfordprattler.org



heyford_prattler@yahoo.co.uk

Please mention that you saw it in **THE PRATTLER** when responding to advertisers !

The Prattler is printed by



Design to Print Limited

46 Daventry Road

Norton Daventry

NN11 2ND

01327 872950

www.designtoprint.org.uk